

Division for Investigation of Maritime Accidents - Denmark

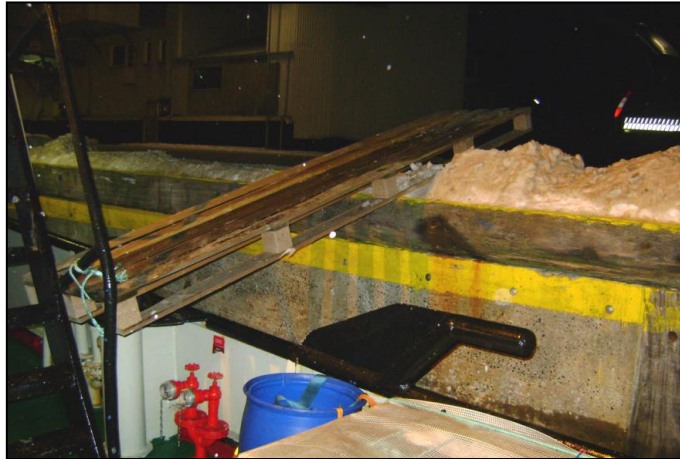
Accident to seafarer – EGESUND – 20 January 2010

Summary

EGESUND is a tug with a tonnage of 135.6 BT. The ship is built in 1994.

During stay in port the ships chief engineer came back to the ship after a visit in the town of Thyborøn. At the day of the accident there were snow on the quay and it was freezing.

When entering the ship he slipped on a provisional arrangement used as a gangway. The arrangement consisted of a wooden pallet 3 metres long. The chief engineer fell in the gap between the ship and quay.



The fall was observed by a witness who alarmed the crew. The chief engineer was rescued by the crew and some bystanders. Subsequently he was hospitalized.

At the fall the chief engineer suffered injuries to his back and chest

Conclusions

It is the opinion of the Division for Investigation of Maritime Accidents that the causes to the accident were:

- An inappropriate arrangement used as gangway.
- Inappropriate use of footwear, wooden shoes.
- The chief engineer's judgment- and reaction capability were reduced due to consumption of alcohol.
- The chief engineers overweight restrained his freedom of movement and made his rescue difficult.
- There were no satisfactory procedures describing to access to the ship.
- There was not sufficient equipment on board to ensure safe access to the ship.

Recommendations

The Division for Investigation of Maritime Accidents has recommended:

1. That the owner ensures means to safe access to the ship under all circumstances.
2. A revision of the ships Safe Management System.

A report is available in Danish.